

# Mangakotukutuku Stream Tributary Inspection - 29 July 2012

Sunny Hills Park

Grant Blackie

Approximate inspection area



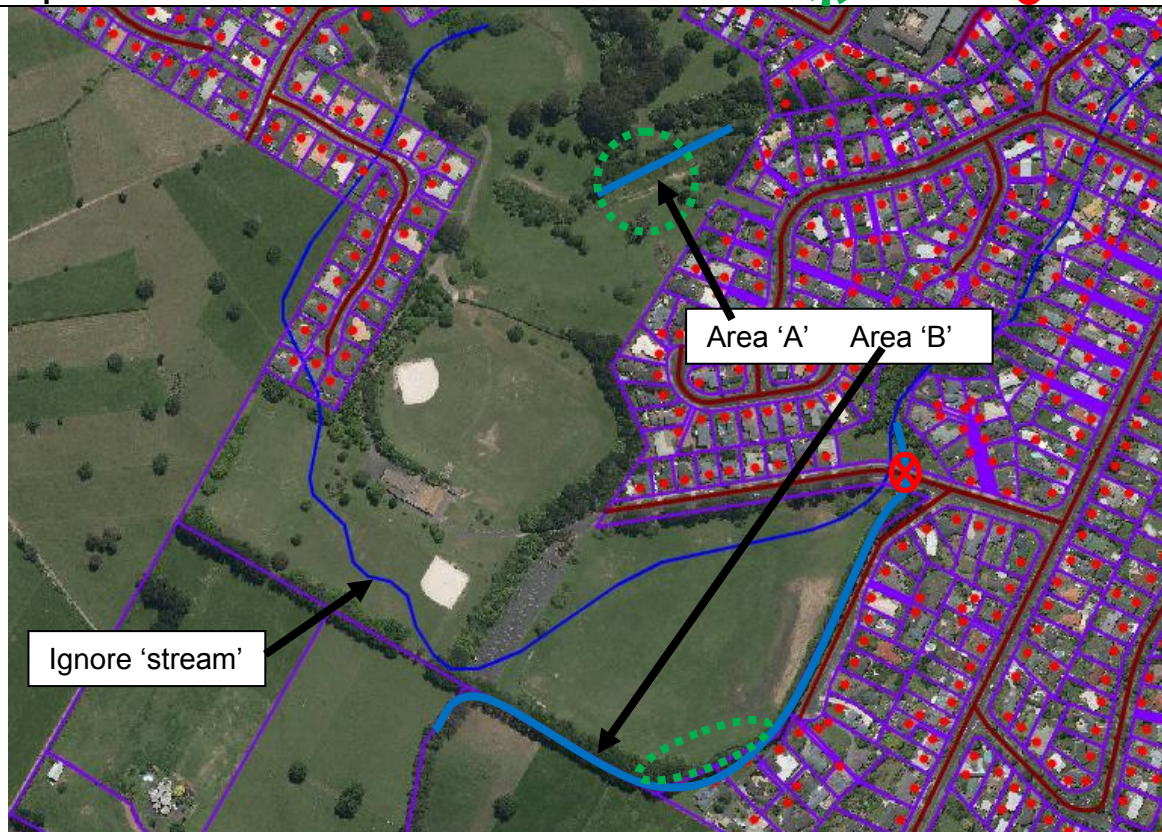
Inspection Reach



Potential wetland areas



Culvert



## **Inspection Comments**

I walked over two areas, identified as 'A' and 'B' and within photos<sup>1</sup> numbered 1-14 attached. The thin blue line presumably indicates the location of the original watercourse which has been totally changed and does not exist anymore.

### **Area 'A'**

Area 'A' is a small tributary with a very limited catchment. The channel has been straightened and planted in part with wide spaced exotic 'park' trees but no real riparian planting present. I would expect very low flows in summer (possibly ephemeral).

Grass areas adjacent were extremely wet following winter rain and could not be walked through, appeared to be a good area for potential wetland planting/attenuation of stormwater flows. Good potential to plant areas.

### **Area 'B'**

Area 'B' is a substantial peat stained stream that enters the park from upstream farmland areas.

The location and or nature of the upstream catchment of the main stream it is not evident from aerial photography and the topographical maps show most of the upstream area (former Rukuhia Swamp) draining to a larger tributary by Saxby's road to the north.

The stream has been totally realigned it would appear from its original watercourse and runs in straight lines along the boundary of the park.

Native plantings have well established on the southern side but there are no plantings on the northern side – very good access and very easy planting potential exists. Some bank erosion evident

The general gradient of the stream is very low adjacent to the park and stream velocities are low, but the stream bed steepens considerably once it passes through the John Webb road culvert and more bank erosion is evident.

A small unplanted tributary 'drain' enters the stream just above the John Webb road culvert.

---

<sup>1</sup> All original photos stored in Waikato Regional Council system G:\GrantBM\ Mangakotukutuku 29Jul2012



1. Area 'A'



2. Area 'A' - potential wetland area



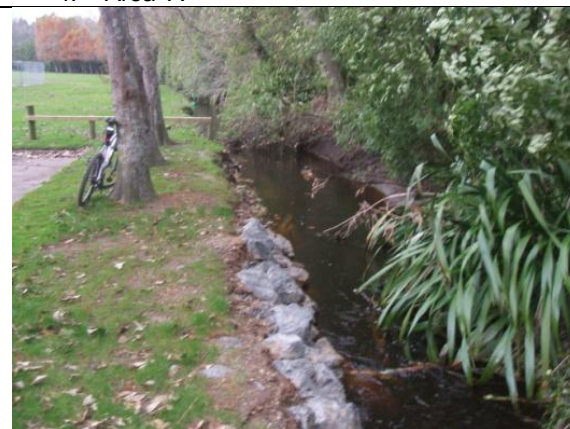
3. Area 'A' – potential wetland area



4. Area 'A'



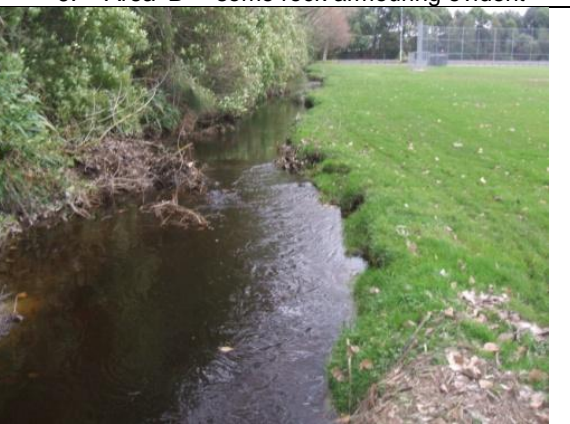
5. Area 'B' – entry area from farmland



6. Area 'B' – some rock armouring evident



7. Area 'B' – good planting on southern banks



8. Area 'B' – some bank erosion



9. Area 'B' – potential wetland area



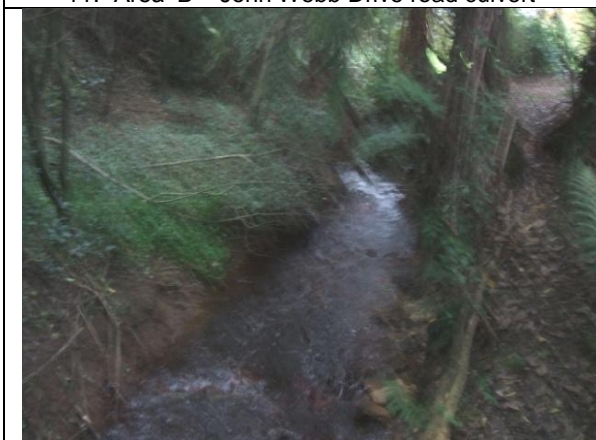
10. Area 'B' – small trib prior to road culvert



11. Area 'B' - John Webb Drive road culvert



12. Area 'B' – d/stream of culvert



13. Area 'B' - d/stream of culvert



14. Area 'B' - d/stream of culvert